

SunEye™ 210



Integrated hand-held tool for solar site evaluation and shade analysis.

That means:

- Easy, accurate measurements and instant feedback
- Fast estimates lead to quick sales and designs
- Data is automatically stored for later review & design



**Expert Tools.
Better Solar.**

Watch an introductory video at www.solmetric.com

Enhancing Site Evaluation

The Solmetric **SunEye 210** represents the next generation for solar energy professionals doing site evaluation and energy production estimates. With a unique patent-pending approach using a calibrated fisheye lens, the **SunEye 210** builds on the popular **SunEye 110** that has earned broad praise from solar professionals worldwide. It brings a new level of accuracy and convenience.

Key Features

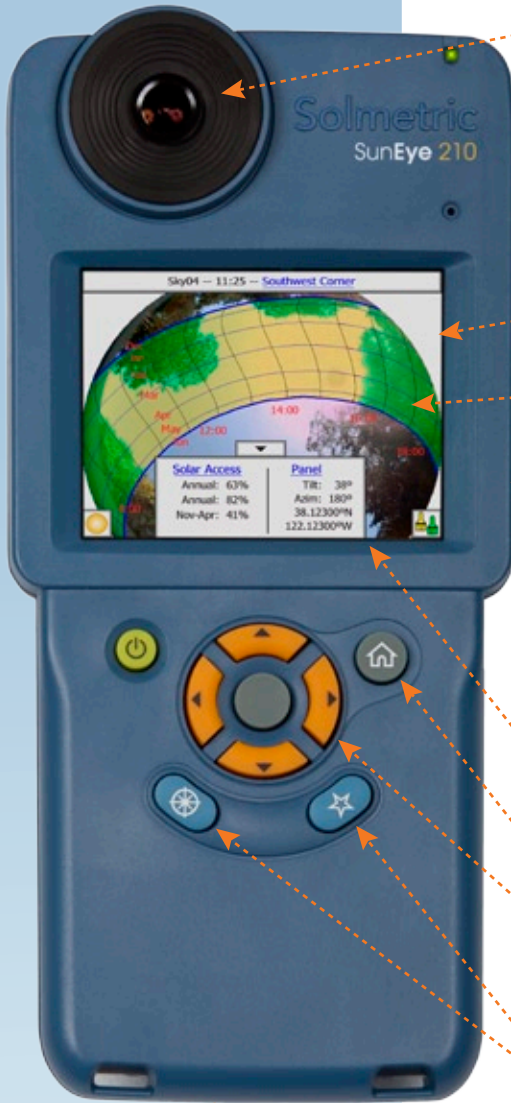
- Electronic Inclinometer
- Electronic Compass
- Single-Handed Operation
- Rugged, Comfortable Design
- 2 Year Warranty Worldwide
- Integrated GPS (Optional)
- Live Survey Mode- View Annual Sunpaths live as you scan the site
- Digital camera with Fish-eye lens
- “What if” editing of sunpath obstructions with new scenario storage



Measuring roof pitch is now integrated into the SunEye 210. Simply lay it on the roof or module and read tilt and heading.

Solmetric SunEye Family	SunEye 110	SunEye 210
Digital Camera with Fisheye Lens	✓	✓
GPS	Option (external)	Option (Integrated)
PV Designer Compatible	✓	✓
One-hand Operation		✓
Electronic Compass		✓
Electronic Inclinometer		✓
Live Survey Mode		✓
Battery	1700 maH	3300 maH
Display Resolution	320x240 (QVGA)	640x480 (VGA)
Two Year Warranty	Outside US	Worldwide

Take a closer look



2 Megapixel Digital Camera with Fisheye Lens

Built-in stylus holder

Impact resistant molded body contains post-consumer plastic

Bright Hi-Resolution VGA Touch screen Display

Annual Sunpaths View
Other views include monthly solar Access, obstruction elevation angles, and fisheye image.

Standard USB-Mini connector transfers SunEye data to Desktop Companion PC software. Edit and export professional reports from your PC.

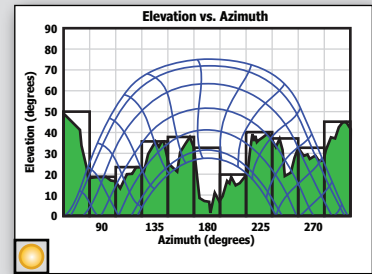
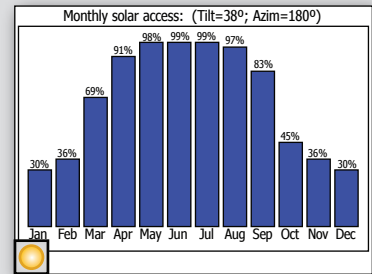
Display of Solar Access and Panel Orientation

Home Button

5-way Navigation Keys. Handy center key snaps picture for one handed operation

Quick Launch Buttons:
Orientation Mode and Quick Measure

Neck/Wrist Strap Attachments



Alternative data views include monthly solar access and obstruction elevation vs. azimuth.

About Solmetric

Solmetric provides accurate, time-saving solutions for solar professionals. Solmetric knowledge and expertise is embedded into each of the following products:

SunEye - Solar Site Evaluation

PV Designer - PV System Design

PV Analyzer - PV System Verification

Ordering Information:

Solmetric SunEye 210 Standard Accessories

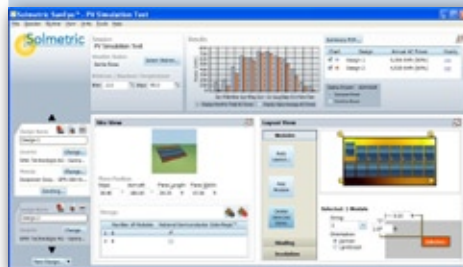
Hard Case with tool storage cut-outs, Stylus, AC Charger, USB Cable, Installation DVD, Lens Cap and Quick Start Guide.

Optional Accessories

PV Designer Software, Neck Strap

Desktop Companion Software

collects the shade data, generates reports and provides data files in many useful formats. The **PV Designer** software adds module layout and energy production estimates.



Products Distributed by:

Free Hot Water
2146 Bering Drive
San Jose, CA 95131
408-432-9900

<http://www.freehotwater.com>

